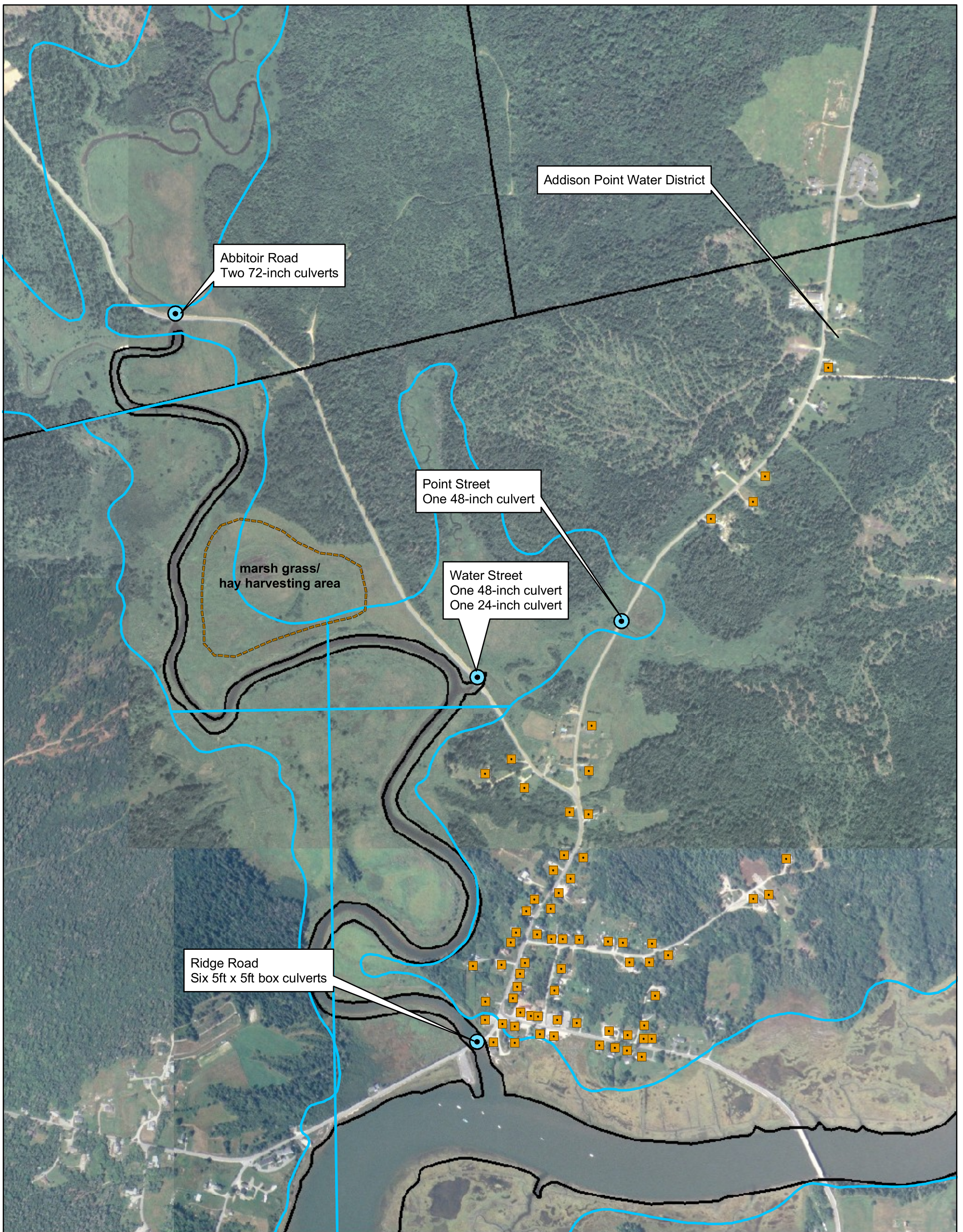


**FIGURE 1**  
Site Location Map  
Addison, Maine

Prepared by Robinson Resources, LLC, 1/26/09

Scale: 1 inch = 2,000 feet

Based on digital USGS 7.5' topographic quadrangles for  
Epping, Columbia Falls, Harrington, and Addison (various dates).



**Legend**

- Addison Point Water District customers
- culverts at road crossings
- - - hayfield
- FEMA 100-year Flood



**Figure 2**  
 Features  
 West Branch of the Pleasant River  
 Addison, Maine

Prepared by  
 Robinson Resources, LLC  
 March 17, 2009

- Notes:
- 1) Aerial photography compiled by Sebago Technics from 2007 NAIP orthophoto for Washington County.
  - 2) Addison Point Water District customers compiled by Robinson Resources based on street address.
  - 3) Culvert locations and sizes obtained from work by the NRCS in 2007.
  - 4) FEMA layer downloaded from the Maine Office of GIS.

